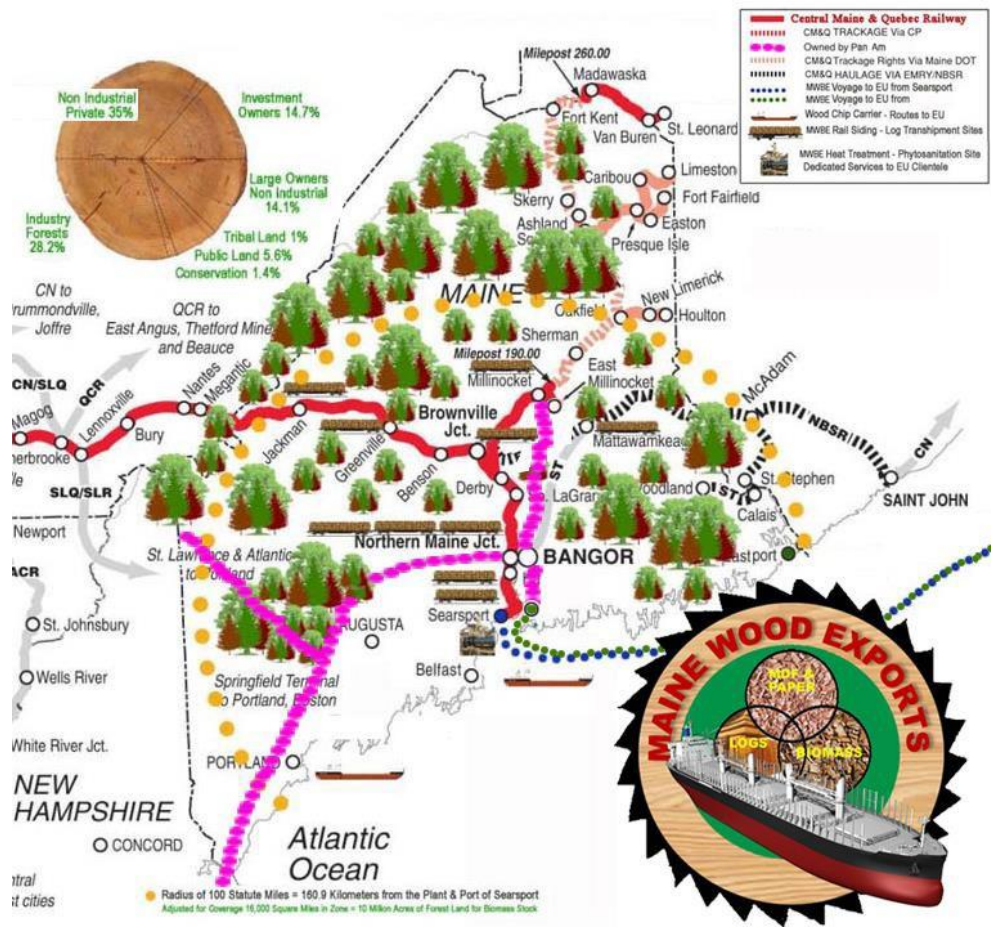




TS Laurent Log Yard, LLC

“Where Maine’s Forest goes to Sea”

Only Exporter with 2 Ports Served by Rail



Rail Service to Searsport

Searsport:

Export

Log Capacity (Vessel) – 336,000 CBM-PY

Log Capacity (Containers) – 10 MMBF-PY



TS Laurent Log Yard

Searsport, Maine

1-207-930-5168

Only Maine Log Exporter with Direct Rail Access & Deep Water Port



Searsport, Maine

Exporting Maine's Forests to the World

Containers



Hemlock



Hemlock



White Ash



White Ash

<http://mainebiomassexports.com/TypicalLogLoad.MTS>



**Hemlock Prior
to Debarking**



**Hemlock After
Preliminary
Debarking**



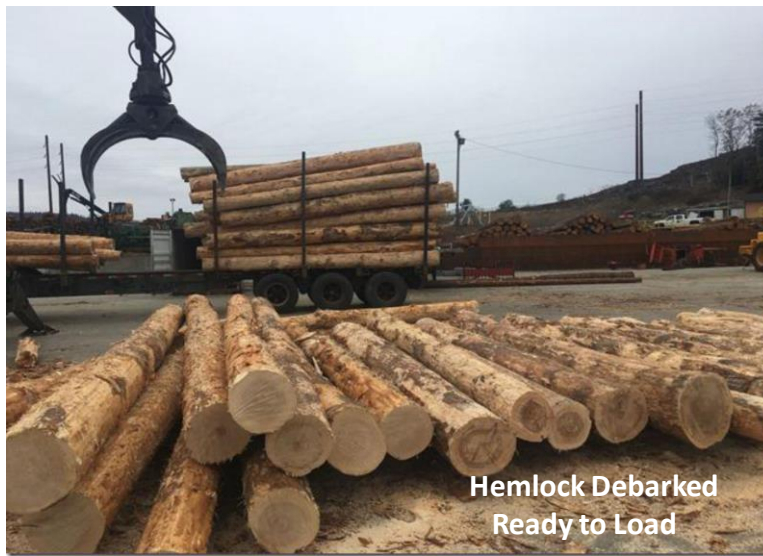
**Hemlock Prior
to Debarking**

**Hemlock After
Preliminary
Debarking**



**Hemlock Prior
to Debarking**

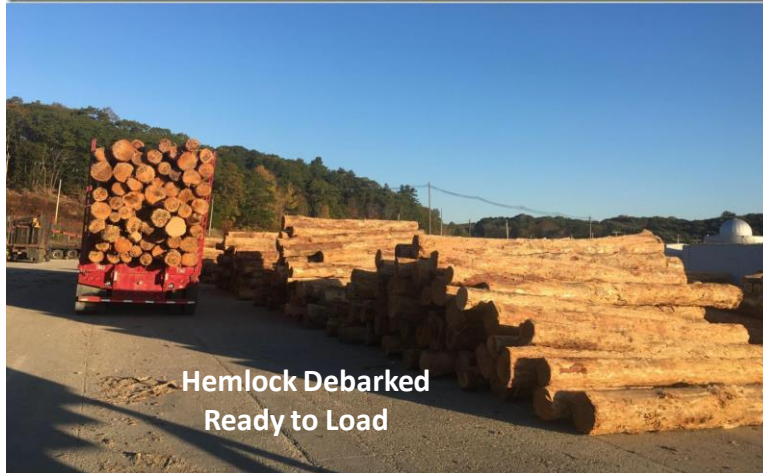




**Hemlock Debarked
Ready to Load**



**Hemlock Debarked
Ready to Load**



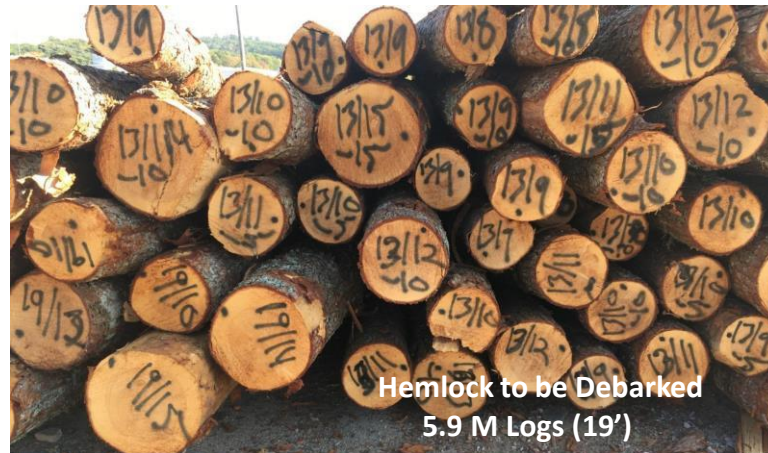
**Hemlock Debarked
Ready to Load**



**Hemlock Debarked
Ready to Load**



Nematode Test
Drilling - Samples



Hemlock to be Debarked
5.9 M Logs (19')



Log Pusher
Loading System



Hemlock to be Debarked
5.9 M Logs (19')

W. Ash to be Debarked
5.9 M Logs

